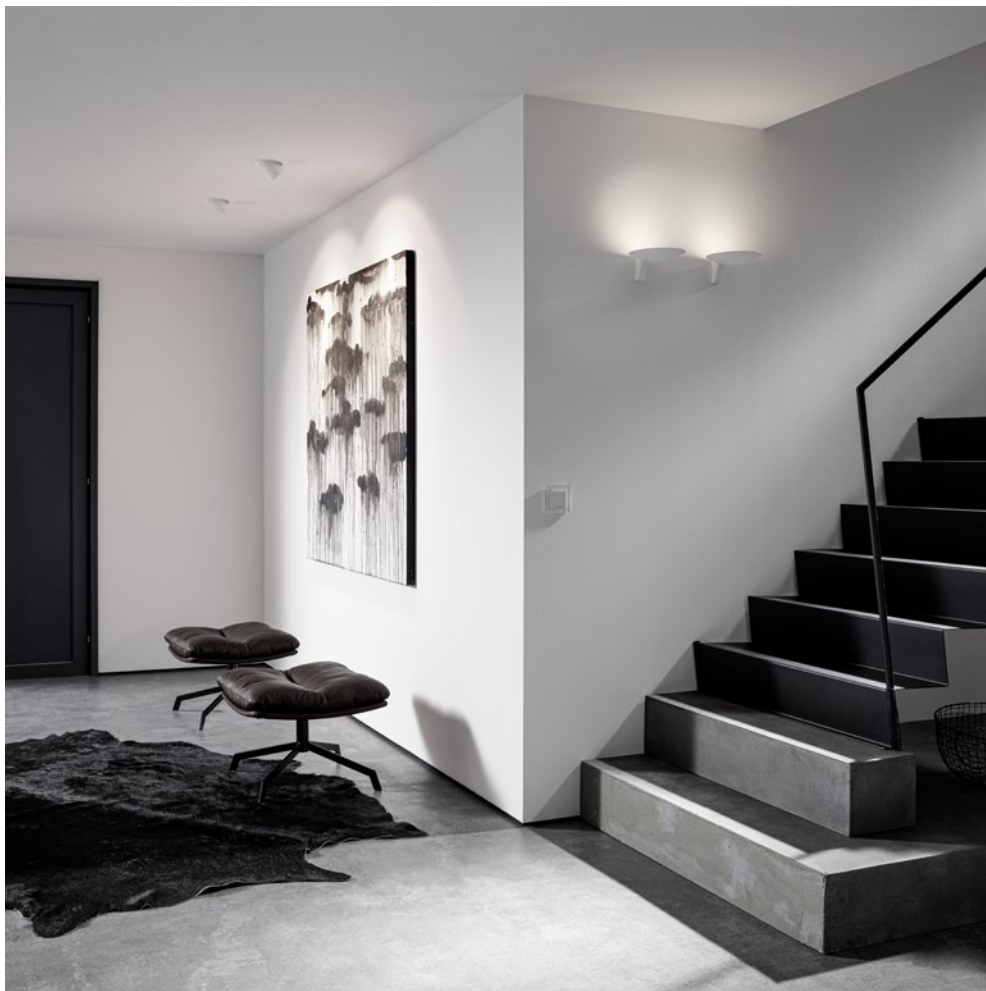


SUNNY SIDE UP

# SCAVA

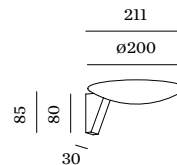


**WEVER & DUCRÉ**  
LIGHTING



# SCAVA

## TECH SPECIFICATIONS



**WALL SURFACE 1.0**  
LED PCB 25W | phase-cut dim  
220-240VAC | 50-60Hz  
aluminium powder coated  
opal PC cover  
● ● ● ● ● ●  
2700K | 3000K



## SHINE A LIGHT UPWARDS

SCAVA's simple shell shape effortlessly brings the elegance of the 1920s to the here and now. It distributes light evenly upwards, creating a warm, inviting atmosphere that suits restaurants or hotel rooms particularly well. The minimalist luminaire is available in elegant white, matt black, or a combination of gold and black, and can also be used to create fantastic uplighter effects.



**MORE INFO**  
[weverducre.com/scava](http://weverducre.com/scava)