



FROM  
BELGIUM  
WITH  
LOVE



WEVER & DUCRÉ  
LIGHTING

# LIGHT LESSON ONE



**WEVER & DUCRÉ**  
LIGHTING



# SPEAKER EMILIE DEHOSSE

Sales Director Spain | Portugal | Latam  
Part of Wever & Ducré since 2016



**WEVER & DUCRÉ**  
LIGHTING



Managing Director



Technical Commercial Officer

# CHAT SUPPORT JOHAN DE SMEDT & FRANCOIS DELEYN

**WEVER & DUCRÉ BVBA**

Spinnerijstraat 99/21

8500 Kortrijk

Belgium

[office@weverducre.com](mailto:office@weverducre.com)



**WEVER & DUCRÉ**

LIGHTING

# NEW PRODUCTS DECO



WEVER & DUCRÉ  
LIGHTING

# PIRRO

## TIME TO PLAY

- Linear recessed downlight with low installation depth or surface mounted fitting with minimal construction height
- Recessed installation without a visible frame, that creates the aesthetics of a trimless version
- Soft edge reflectors, matt inside for glare control
- Optional honeycombs ensure an almost invisible light source



# PIRRO

## TIME TO PLAY

- Various color variations and combinations
- Optionally 2700K / 3000K - DALI converter possible
- Control via DALI for built-in versions possible
- Beam angle 32 ° - no multi-shadows



CEILING RECESSED | SURFACE



**PIRRO 1.0 | 4.1 | CEILING SURFACE**



**PIRRO 6.0 | CEILING SURFACE**



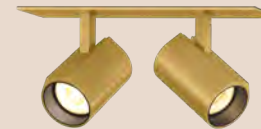
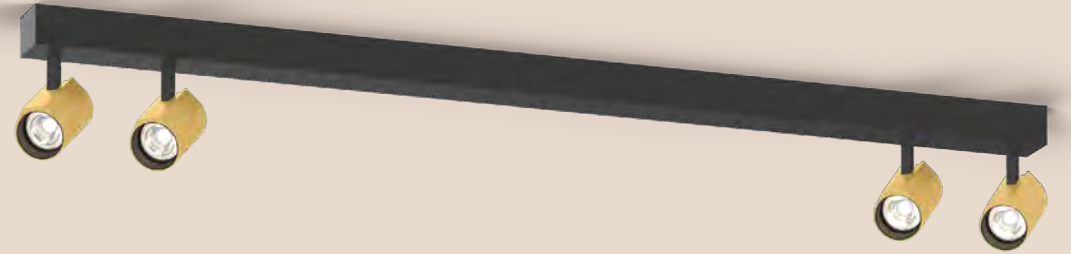


**PIRRO 1.0 | 2.0 | 4.0 | 6.0 | CEILING RECESSED**

# CENO

## SMALL SPOTS, MASSIVE IMPACT

- Recessed and surface mounted spot + track STREX 48V
- Minimal construction height
- Flattened cylinder creates a exciting design line



CEILING RECESSED | SURFACE

# CENO

## SMALL SPOTS, MASSIVE IMPACT

- Rotatable and swiveling
- Swivel arm integrates into the luminaire body
- Thanks to the set back LED optics and the black tube the glare is reduced drastically
- For use as accent lighting with minimal intervention in the room





**CENO 2.0 | CEILING SURFACE**



**CENO 1.0 | CEILING RECESSED**

# ODREY

## SHE LIGHTS UP EVERY ROOM

- Series of pendant- and wall mounted lamp for individual use
- Umbrellas and colours can be used and combined in a multitude of possibilities of the lamp in the style of the 1950s
- Distinctive personality with elegant presence
- Emphasizes the design of the interior architecture
- To reduce the glare we use consciously the spotlight characteristics, so it enables to stage table surfaces optimally
- Compact size, clear lines, geometric shapes
- Single lamp or in groups



# ODREY

## MOUNTING

available in ● black or ● gold

1.0

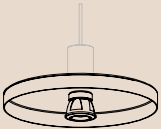


## SHADES

available in ● black or ● gold



1.0  
ø55



2.0  
ø250



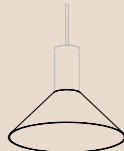
3.0  
ø100



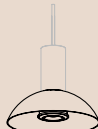
4.0  
ø124



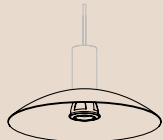
5.0  
ø115



6.0  
ø190



7.0  
ø150

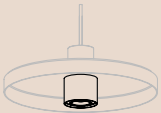


8.0  
ø250



## OPTIONAL INNER COVERS

available in ● black or ● gold



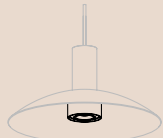
2.0



1.0



1.0



1.0



**ODREY 2.0 | 3.0 | 4.0 | 5.0 | 6.0 | 7.0 | CEILING SUSPENDED**



**ODREY 4.0 | WALL SURFACE**



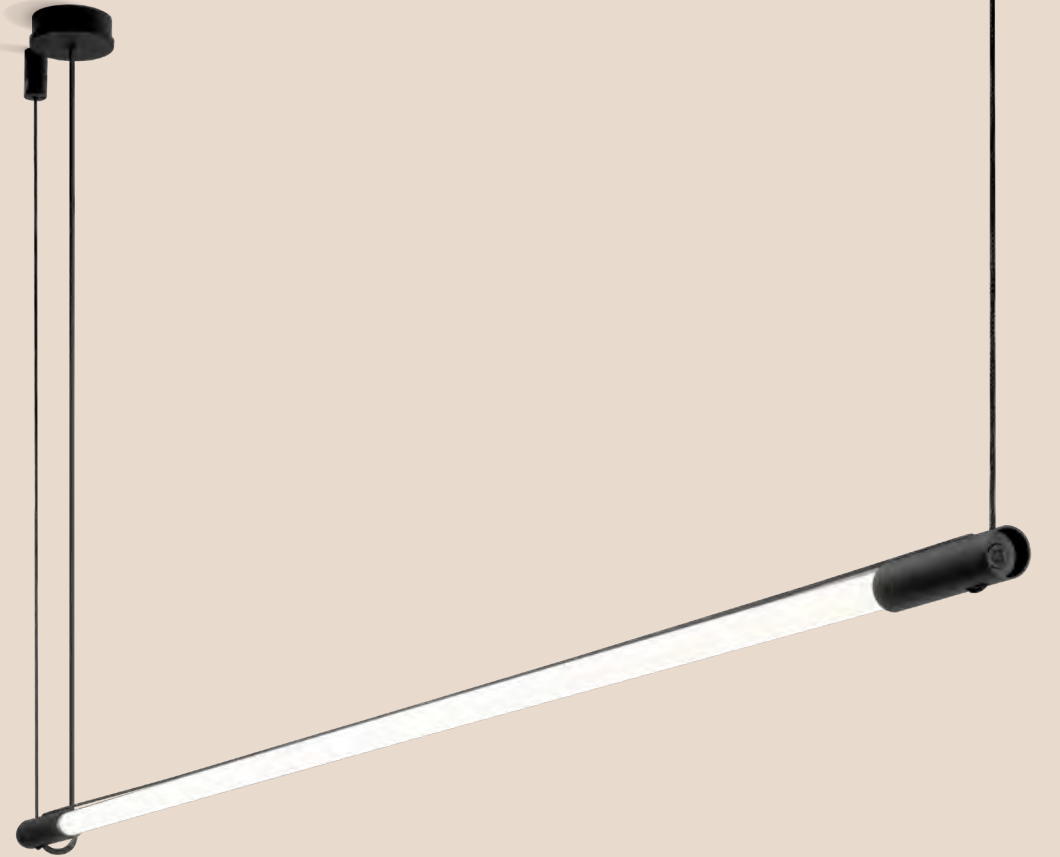
**ODREY 4.0 | 7.0 | CEILING SUSPENDED | WALL SURFACE**



# DARF

## BOTTOM LINE

- Lightsaber for artistic use as well as for the student apartment
- Pure aesthetic minimalism
- New interpretation of the fluorescent tube in the modern LED garment - optionally dimmable
- Height adjustable by black textile cable
- Dinstinctive end caps ensure your appealing design appearance



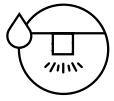
CEILING SUSPENDED | WALL SURFACE



**DARF 1.0 | CEILING SUSPENDED**



# TRAM



## LET IT OUT

- Small outdoor lamp round / square
- Wall and ceiling version
- Flush glasses against backwater
- Clear reflectors for brilliant light
- 3 paint finishes - also in RAL 7016 anthracite
- Use for linear architecture



CEILING | WALL SURFACE



**TRAM 2.0 | OUTDOOR WALL SURFACE**

# SARA SNOOZE

## HAVE A GOOD ONE

- Designed as a reading lamp for use in Hotels or apartments
- Flexible and versatile
- Easily rotatable and swiveling



CEILING | WALL SURFACE



**SARA SNOOZE 1.0 | WALL SURFACE**

# WETRO

## SHINE BRIGHT

- 3 new high-quality glasses, in 3 known sizes
- Mouth-blown glass - made in Italy, Venice
- Smoky grey in diamond structure and line structure
- Light grey opalized with 3 layers of glass
- For the stylish restaurant or the trendy bar
- With multi-canopy for various table lengths in the private sector

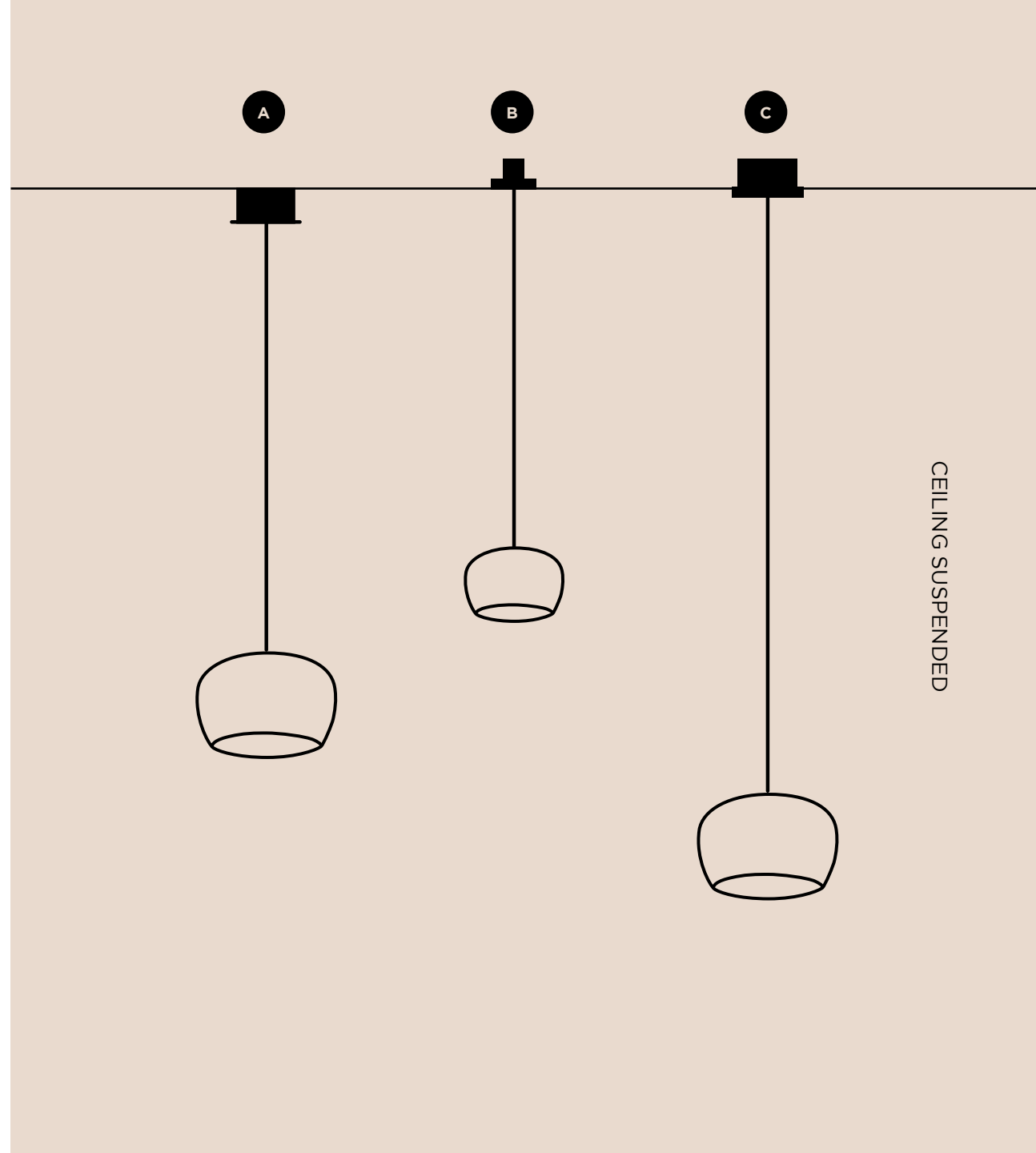
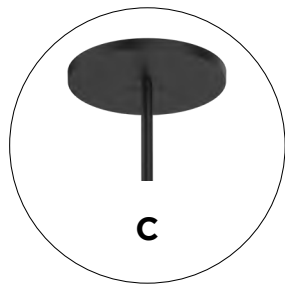
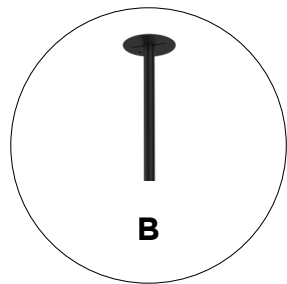
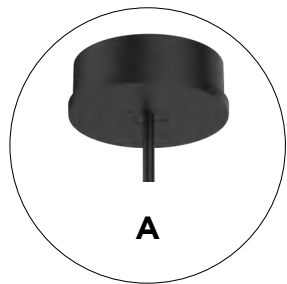


CEILING SUSPENDED

# WETRO SINGLE

## SHINE BRIGHT

- Individual suspensions
- Single suspension (A)
- Invisible ceiling suspension (B)
- Single ceiling base (C)

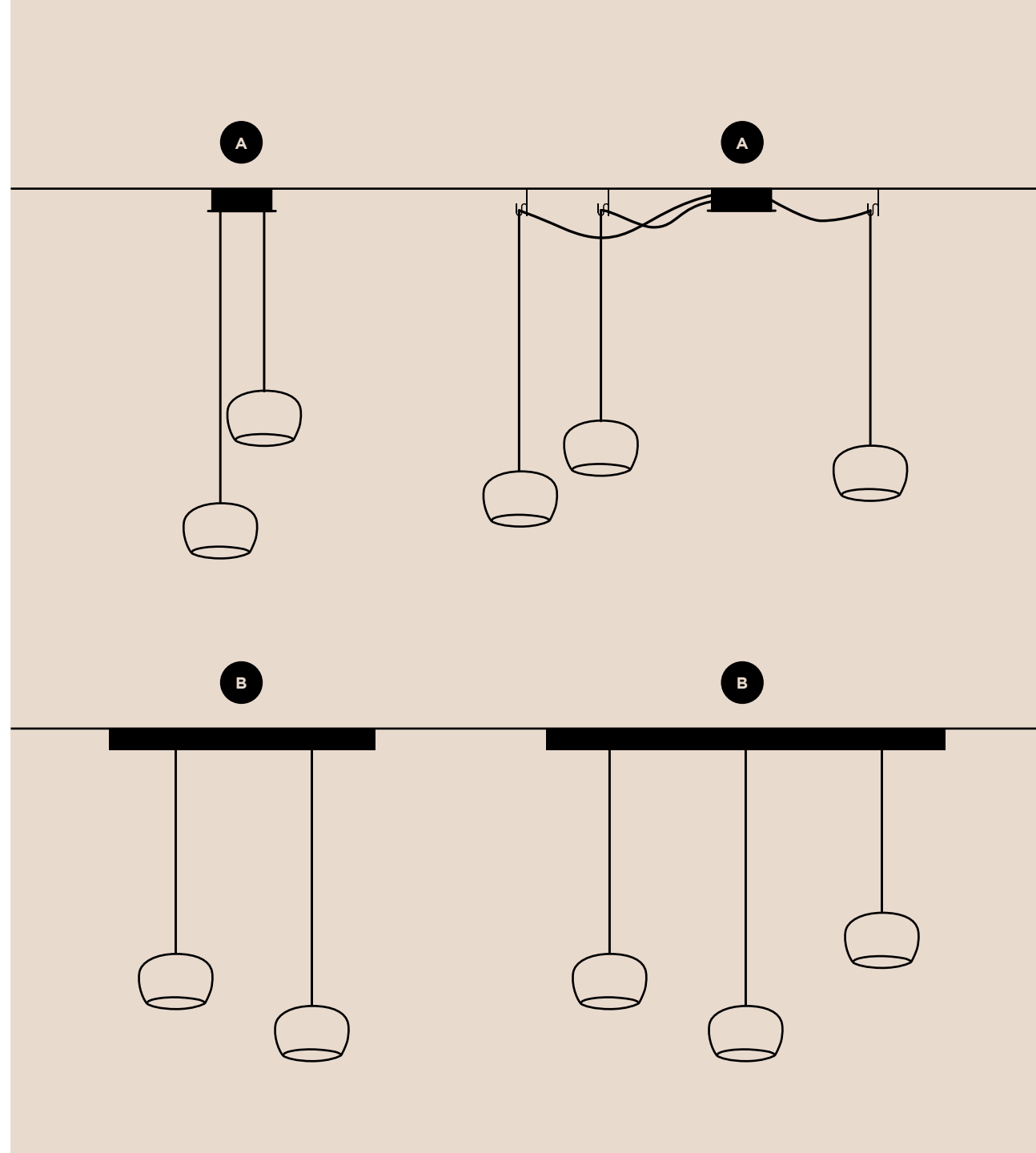




# WETRO MULTI

## SHINE BRIGHT

- Multiple suspensions
- Ceiling base round (A)  
2-8 luminaires
- Ceiling base (B)  
available in:  
600mm for 2 luminaires  
900mm for 3 luminaires  
1200mm for 4 luminaires  
1500mm for 5 luminaires





**WETRO 1.0 | 2.0 | CEILING SUSPENDED**



**WETRO 1.0 | 2.0 | 3.0 | CEILING SUSPENDED**

# NEW PRODUCTS TECHNIC



WEVER & DUCRÉ  
LIGHTING

# HOW DEEP IS YOUR DEEP?

## DEEP

FIX



**BIJOU 1.0**  
LED



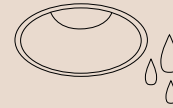
**BIJOU 2.0**  
LED



**PETIT 1.0**  
LED



**1.0**  
LED | MR16 | PAR16  
ZigBee



**IP44 1.0**  
LED | MR16 | PAR16  
ZigBee

## DEEPER

FIX



**1.0**  
LED | MR16 | PAR16  
ZigBee



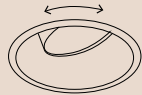
**IP44 1.0**  
LED | MR16 | PAR16  
ZigBee

## DEEP ADJUST

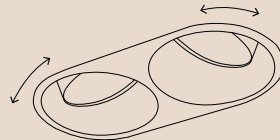
ADJUSTABLE



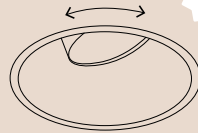
**PETIT 1.0**  
LED



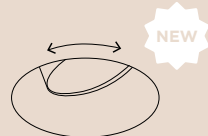
**1.0**  
LED | MR16 | PAR16  
ZigBee



**2.0**  
LED | PAR16  
ZigBee



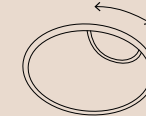
**FORT 1.0**  
LED



**TRIMLESS 1.0**  
LED | MR16 | PAR16

## DEEP ASYM

ADJUSTABLE



**1.0**  
LED | MR16 | PAR16

# DEEP BIJOU

## HOW DEEP IS YOUR DEEP

- Extension of our minimalist Classic
- Visual comfort due to the low lying LED module with prism optics



CEILING RECESSED

# DEEP ADJUST TRIMLESS

## HOW DEEP IS YOUR DEEP

- For the perfect integration into the Plasterboard ceiling
- Still swiveling
- The dot on the I of our great variety of DEEP Series - surface colors, illuminance, color temperatures, IP protection, dimming possibilities - the completion of a timeless Classic

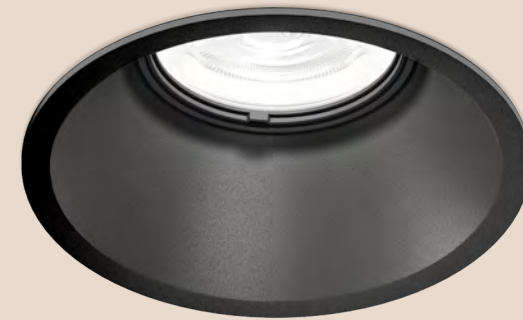


CEILING RECESSED

# DEEP FORT

## HOW DEEP IS YOUR DEEP

- Completes our DEEP series with a strong lumen package in a pragmatic and cost-effective optimized way
- Installation without a visible frame, that's how the aesthetics of a trimless version is created
- Soft edge reflectors, matt inside for enhanced glare control
- Optional honeycombs ensure a almost invisible light source
- Various color variations and combinations
- Optionally 2700K / 3000K - DALI converter possible



CEILING RECESSED



**DEEP BIJOU 1.0 | CEILING RECESSED**



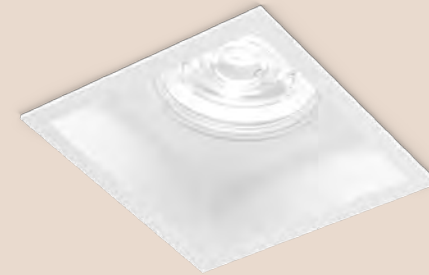
**DEEP ADJUST FORT 1.0 | CEILING RECESSED**



# PLANO ADJUST FORT

## TIME TO PLAY

- Linear recessed downlight with low installation depth or size
- Installation without a visible frame, that is how the aesthetics of a trimless version should be
- Soft edge reflectors, matt inside for better glare control
- Optional honeycombs provide a almost invisible light source
- Various colour variations and combinations available
- optionally 2700K / 3000K - DALI converter possible

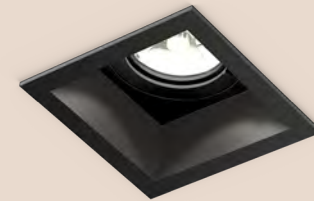


CEILING RECESSED

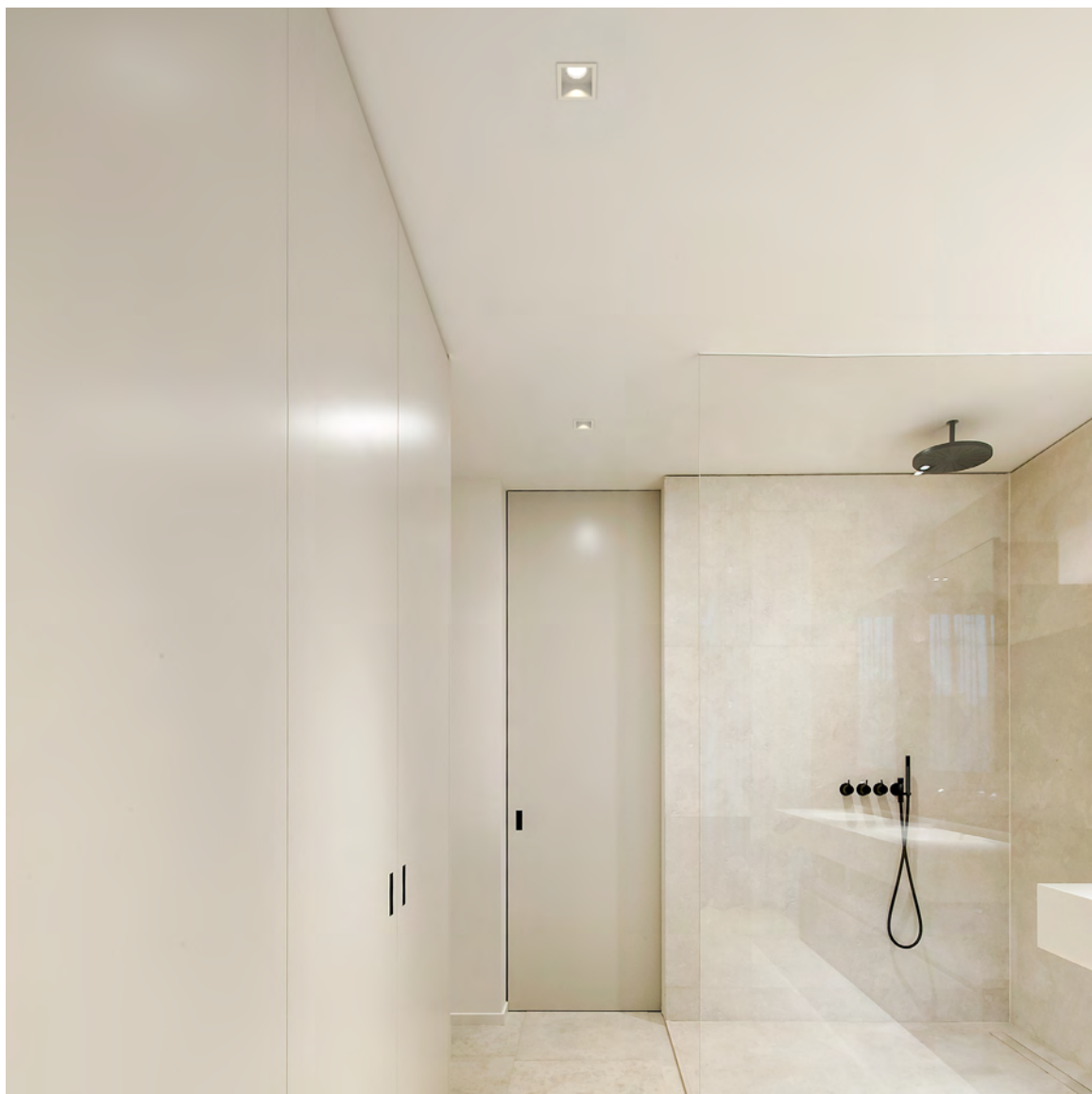
# PLANO IP44

## TIME TO PLAY

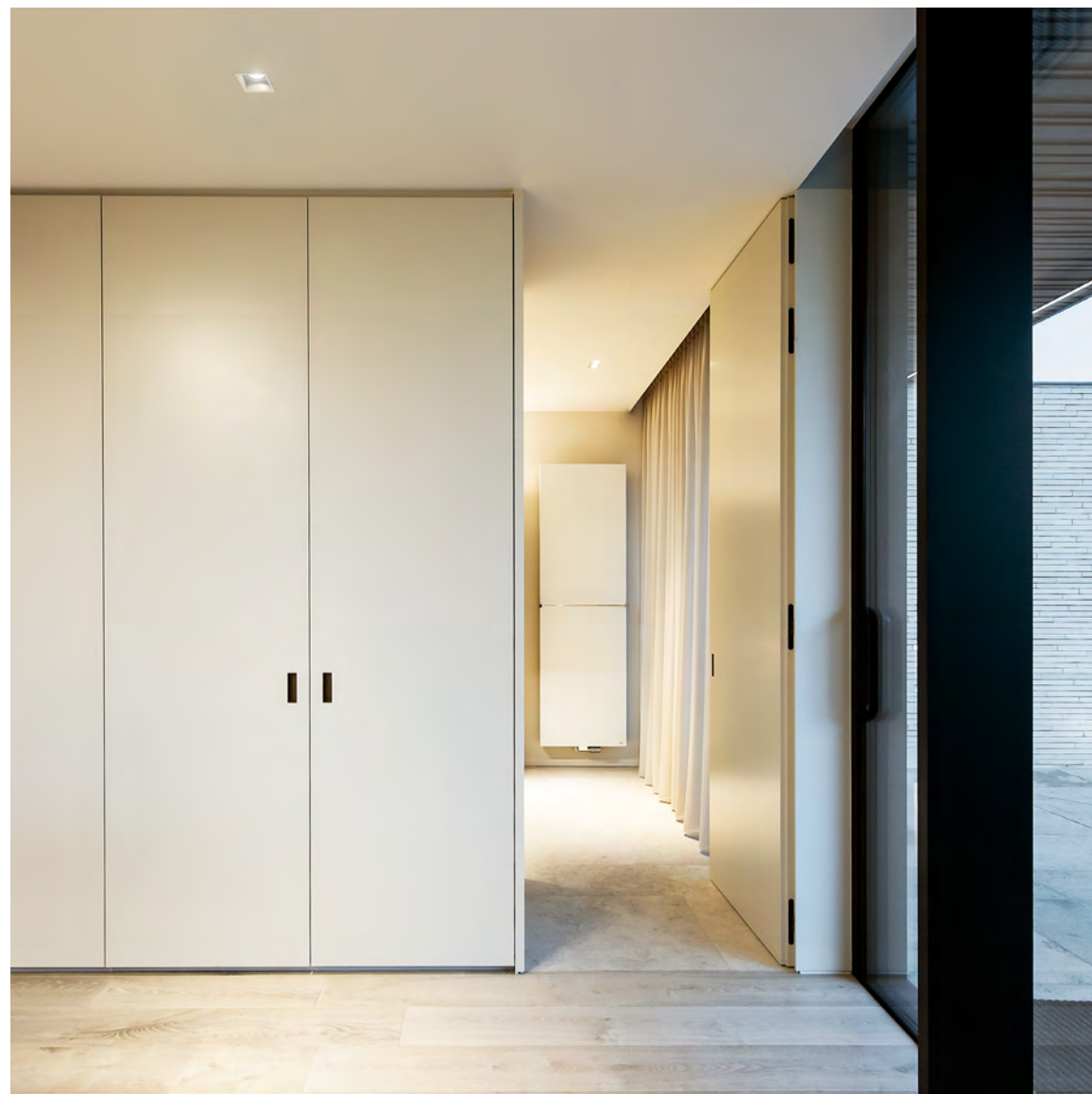
- Extension of our quadratic classic for IP-protected areas in bathrooms or wellness areas
- The set back LED modules ensure pleasant, glare-free visual comfort



CEILING RECESSED



**PLANO IP44 1.0 | CEILING RECESSED**



**PLANO ADJUST FORT 1.0 | CEILING RECESSED**

**THIS IS NOT  
THE END**



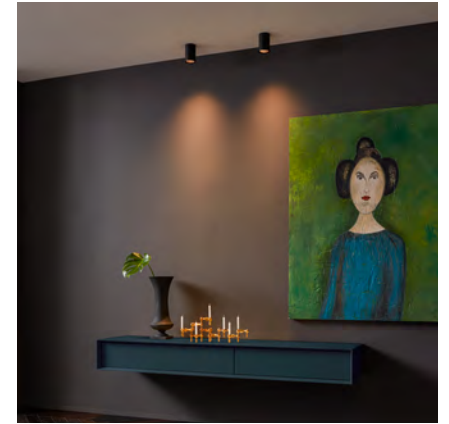
**WEVER & DUCRÉ**  
LIGHTING

# LIGHT LESSON TWO

**TOPIC** New Products 2020 - Part Two  
**SPEAKER** Emilie Dehosse, Sales Director Spain  
**DATE** 23rd June 2020  
**TIME** 3:00-3:30pm  
**LANGUAGE** English



**WEVER & DUCRÉ**  
LIGHTING



**DECO NEW**

**TECHNIC NEW**

**TECHNIC EXTENDED**