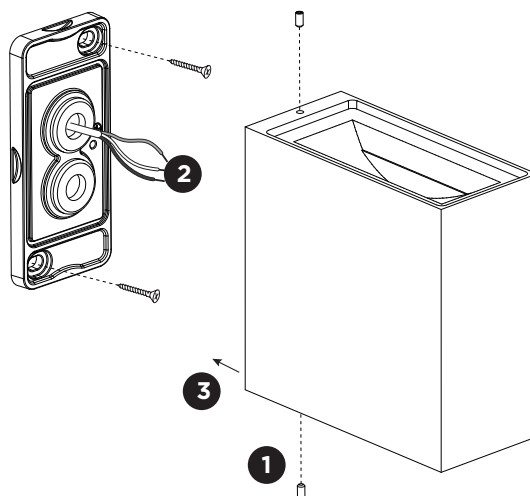
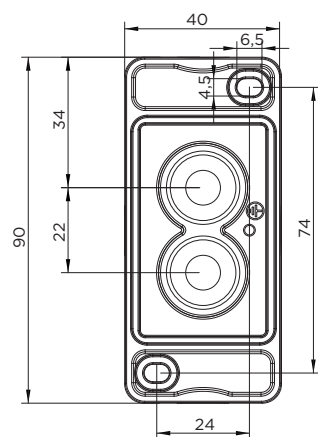


STATION

INSTALLATION INSTRUCTIONS | DECEMBER 2022



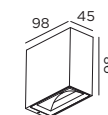
Mounting base:



grommets:

	A	B	C
CABLE			
TYPE	ROUND H05RN-F H07RN8-F H07RN-F	ROUND H05RN-F	ROUND
OUTSIDE Ø	min 6.8mm max 8.9mm	min 5mm max 6.8mm	min 1.5mm max 2.6mm
CONDUCTION SECTION	2or3x 0.75mm ² 2or3x 1.0mm ² 2or3x 1.5mm ²	2or3x 0.75mm ² 2x 1.0mm ²	0.75mm ² 1.5mm ²

DIMENSIONS



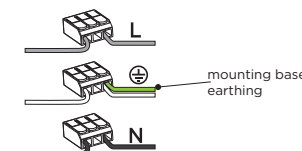
1.0 / 2.0

MOUNTING INSTRUCTION

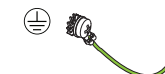
- 1 Remove the mounting base from the luminaire by loosening the side screws and mount it on the wall with screws (screws are not included).

2 POWER CONNECTION

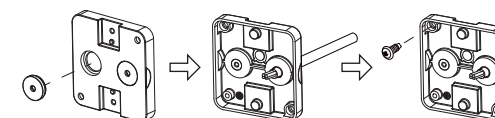
connect to 220-240V



Connect the earth cable.



Please use a matching grommet based on the used 220-240V cable and the corresponding type in the overview table.



Push the grommet into the back plate.

Pull the cable through the back plate.

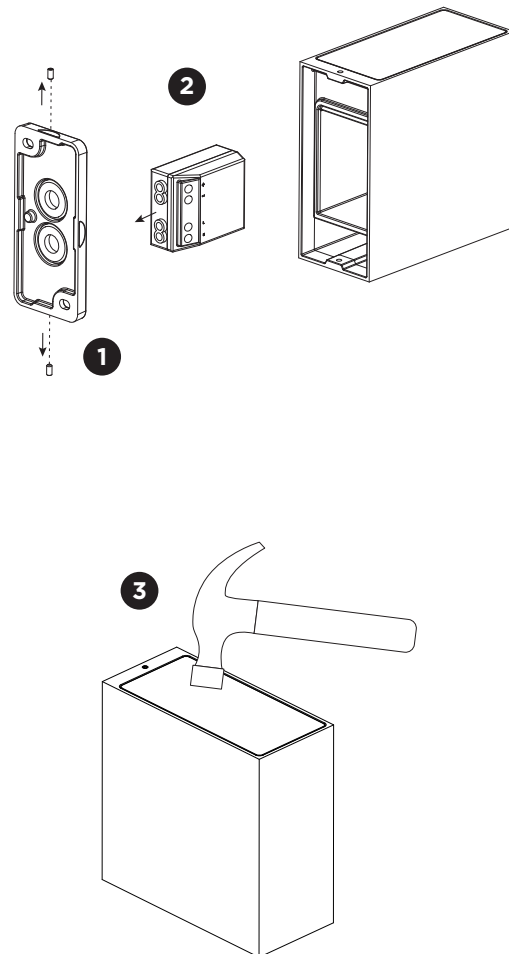
Mount the back plate on the wall.

- 3 Fix the luminaire to the mounting base with the socket screws.

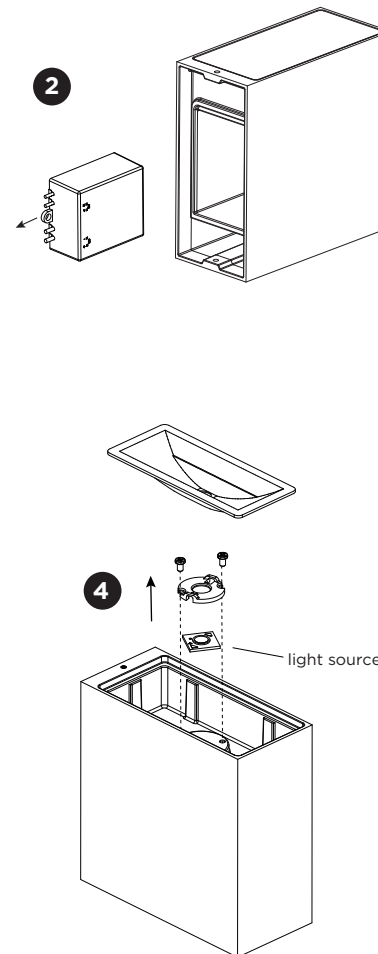
STATION

INSTALLATION INSTRUCTIONS | DECEMBER 2022

INDOOR



OUTDOOR



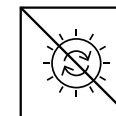
DISMOUNTING AND RECYCLING INSTRUCTIONS

Light source & driver

- 1 Loosen the side screws and remove the lamp housing from the mounting base.
- 2 Loosen the wires to remove the driver.
- 3 Break the glass.
- 4 Take out the reflector and unscrew the holder to remove the light source.



The driver can be replaced by the end user.



The light source is not replaceable.



This luminaire contains a light source with the energy class F.



WEVER & DUCRÉ
LIGHTING

WEVER & DUCRÉ BV

Spinnerijstraat 99/21, 8500 Kortrijk, Belgium
weverducre.com