

TAPE 1.0

722174B5

Project

Type

Notes

Quantity

Date

GENERAL

Wall , Surface

Black Matt

IP65

Exterior

Indirect 215 lm

Direct 215 lm

Total 430 lm

CIE flux code: 12 45 84 50 100

LED

3000 K

CRI ≥ 90

L80 / 60000 h

3 SDCM

ELECTRICAL

phase-cut dim

220 - 240 V

Total connected power 7.8 W

Class 1

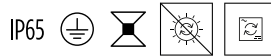
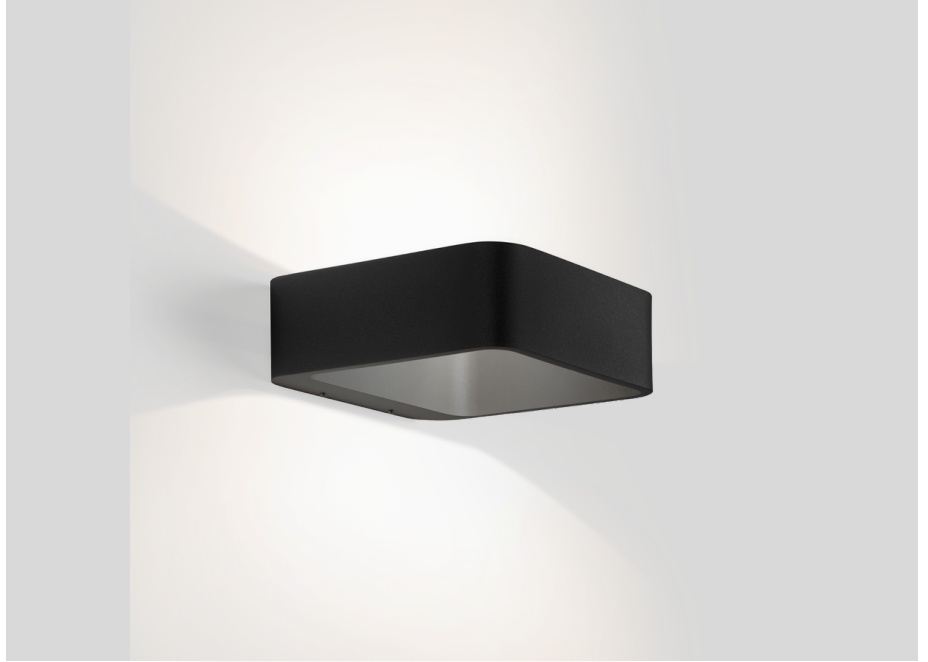
PHYSICAL

Length 180 mm

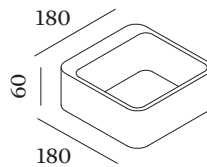
Width 180 mm

Height 60 mm

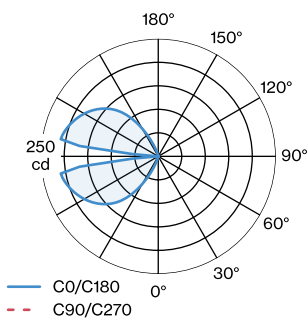
0.73 kg



Rectangular wall surface luminaire made from aluminium; rounded edges; surface Black Matt; powder coated; matt texture; with COB (Chip on Board) technology for maximum efficiency; phase-cut dim; light colour 3000 K; binning initial MacAdam ≤ 3 SDCM; CRI ≥ 90 ; 220 - 240 V; degree of protection IP65; PC1; driver included; light source not replaceable; control gear replaceable by end-user;



LIGHT DISTRIBUTION



TAPE

1.0

722174B5

Maintenance Factors

Operating Time [h]	10 000	20 000	30 000	40 000	50 000
LLMF	0.98	0.98	0.98	0.97	0.97
LSF	1	1	1	1	1

MF	$LMF \times RSMF \times LLMF \times LSF$	RSMF ^a	Room Surface Maintenance Factor
MF	Maintenance Factor	LLMF	Lamp Lumens Maintenance Factor
LMF ^a	Luminaire Maintenance Factor	LSF	Lamp Survival Faktor

^a According to “CIE 97, Maintenance of indoor electric lighting systems”, 2005, ISBN 3-900-734-34-8. The values must be determined by the planner.