

TAPE 1.0

722174A5

GENERAL

Wall , Surface
Anthracite Grey
RAL 7016 ^a
IP65
Exterior
Indirect 215 lm
Direct 215 lm
Total 430 lm
CIE flux code: 12 45 84 50 100

LED

3000 K
CRI ≥ 90
L80 / 60000 h
3 SDCM

ELECTRICAL

phase-cut dim
220 - 240 V
Total connected power 7.8 W
Class 1

PHYSICAL

Length 180 mm
Width 180 mm
Height 60 mm
0.73 kg

^a Color may deviate slightly due to production conditions.

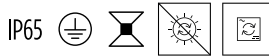
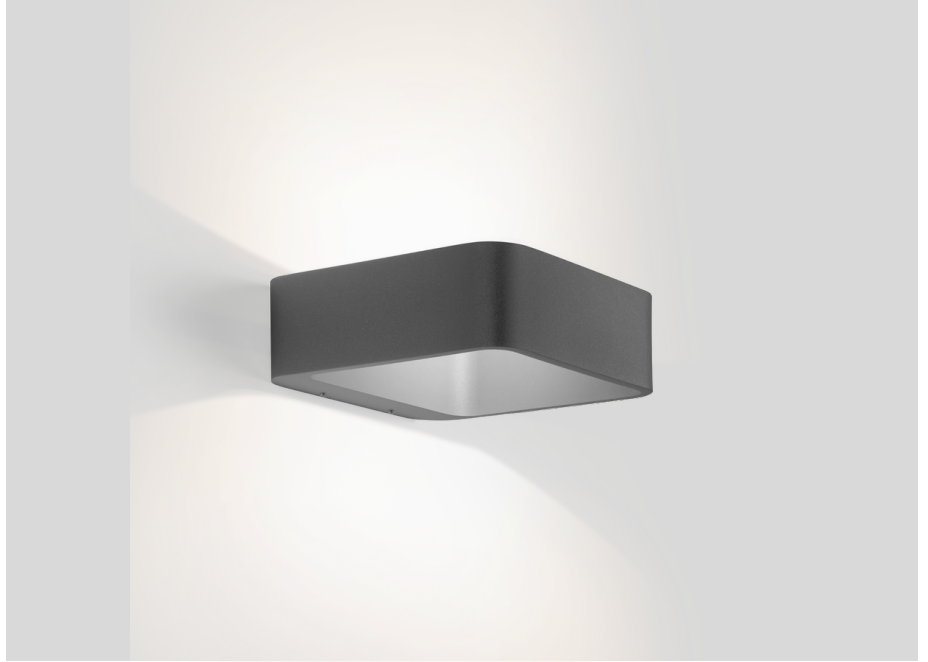
Project

Type

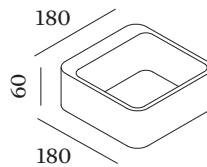
Notes

Quantity

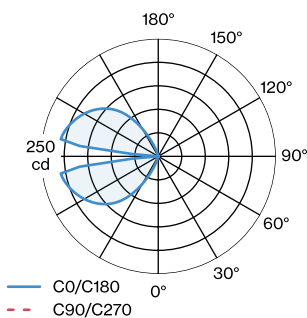
Date



Rectangular wall surface luminaire made from aluminium; rounded edges; surface Anthracite Grey; powder coated; matt texture; RAL 7016; with COB (Chip on Board) technology for maximum efficiency; phase-cut dim; light colour 3000 K; binning initial MacAdam ≤ 3 SDCM; CRI ≥ 90; 220 - 240 V; degree of protection IP65; PC1; driver included; light source not replaceable; control gear replaceable by end-user;



LIGHT DISTRIBUTION



TAPE

1.0

722174A5

Maintenance Factors

Operating Time [h]	10 000	20 000	30 000	40 000	50 000
LLMF	0.98	0.98	0.98	0.97	0.97
LSF	1	1	1	1	1

MF	$LMF \times RSMF \times LLMF \times LSF$	RSMF ^a	Room Surface Maintenance Factor
MF	Maintenance Factor	LLMF	Lamp Lumens Maintenance Factor
LMF ^a	Luminaire Maintenance Factor	LSF	Lamp Survival Faktor

^a According to “CIE 97, Maintenance of indoor electric lighting systems”, 2005, ISBN 3-900-734-34-8. The values must be determined by the planner.