



WEVER & DUCRÉ  
LIGHTING

# RAY on STREX 1.0

258262WQ3

Project

Type

Notes

Quantity

Date

## GENERAL

Ceiling, Track

White Matt

Adapter White Matt

Housing + Inner Reflector Bronze

IP20

Interior

Output: 440 lm

CIE flux code: 99 100 100 100 100

## LED

2700 K

CRI  $\geq 90$

2 SDCM

## OPTICAL

Medium, Beam angle 25°

## ELECTRICAL

non dim

48 V

LED Inset 7.0 W

Class 3

## PHYSICAL

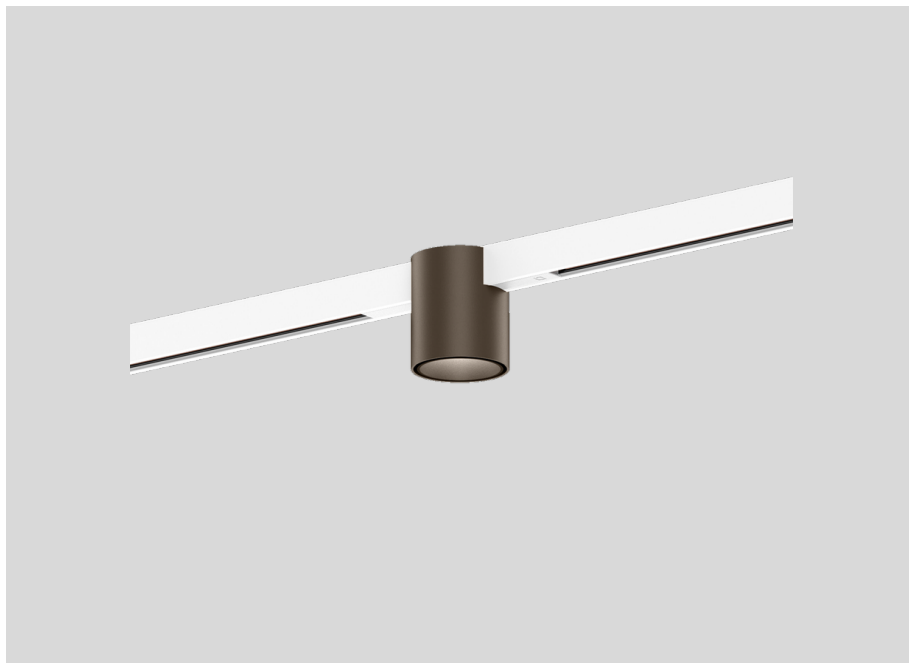
Diameter 70 mm

Height 82 mm

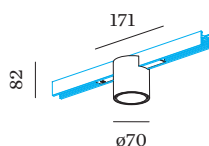
0.16 kg

171 (adapter) mm

incl. Strex 48 V track adapter



48V track downlight made from die-cast aluminium; cylindrical shape; for surface and suspended tracks; adapter in White Matt; surface housing Bronze wet painted; brushed; with inner reflector in Bronze wet painted; matt fine texture; with COB (Chip on Board) technology for maximum efficiency; non dim; light colour 2700 K; binning initial MacAdam  $\leq 2$  SDCM; CRI  $\geq 90$ ; CRI (Colour Rendering Index)  $\geq 90$ ; 48 V; degree of protection IP20; PC3; UGR  $\leq 13$ ; VDU compatible workplace luminaire according to DIN EN 12464-1; luminance above 65°  $\leq 1500$  cd/m<sup>2</sup>; light source replaceable by an authorized professional; control gear replaceable by an authorized professional;



# RAY

## on STREX 1.0

258262WQ3

### ELECTRICAL

#### In Track Driver 100W

TYPE	COLOUR	L · W · H (MM)	ORDERCODE
STREX system   surface	Black	438-16-18	9 0 0 1 4 1 4 3
STREX system   surface	White	438-16-18	9 0 0 1 4 1 4 4
STREX system   suspended	White	3000	9 0 0 1 4 1 5 7
STREX system   suspended	Black	3000	9 0 0 1 4 1 7 4
STREX system   surface	Black	468-26-29	9 0 0 1 4 1 7 6
STREX system   surface	White	468-26-29	9 0 0 1 4 1 7 8
STREX system   surface	Bronze + Black	468-26-29	9 0 0 1 4 3 7 6
STREX system   surface	Champagne + Black	468-26-29	9 0 0 1 4 3 7 8

#### In Track Driver 250W

TYPE	COLOUR	L · W · H (MM)	ORDERCODE
STREX system   surface	Black	408-16-18	9 0 0 1 4 1 4 5
STREX system   surface	White	408-16-18	9 0 0 1 4 1 4 6
STREX system   suspended	White	3000	9 0 0 1 4 1 5 8
STREX system   suspended	Black	3000	9 0 0 1 4 1 7 5
STREX system   surface	Black	438-26-29	9 0 0 1 4 1 7 7
STREX system   surface	White	438-26-29	9 0 0 1 4 1 7 9
STREX system   surface	Bronze + Black	438-26-29	9 0 0 1 4 3 7 7
STREX system   surface	Champagne + Black	438-26-29	9 0 0 1 4 3 7 9

#### Power Feed

TYPE	COLOUR	L · H (MM)	ORDERCODE
STREX system	White	112-18	9 0 0 1 4 1 5 3
STREX system	Black	112-18	9 0 0 1 4 1 5 4

#### Wireless Casambi Control

TYPE	COLOUR	L · H (MM)	ORDERCODE
STREX system	White	143-58	9 0 0 1 4 1 5 5
STREX system	Black	143-58	9 0 0 1 4 1 5 6

#### Connector

TYPE	COLOUR	L · H (MM)	ORDERCODE
STREX system	White	105-18	9 0 0 1 4 1 9 6
STREX system	Black	105-18	9 0 0 1 4 1 9 7

#### L-Connector

TYPE	COLOUR	L · W · H (MM)	ORDERCODE
STREX system   surface/suspended	White	105-105-19	9 0 0 1 4 1 9 8
STREX system   surface/suspended	Black	105-105-19	9 0 0 1 4 1 9 9
STREX system   surface/suspended	Champagne + Black	105-105-19	9 0 0 1 4 3 9 8
STREX system   surface/suspended	Bronze + Black	105-105-19	9 0 0 1 4 3 9 9

#### T-Connector

TYPE	COLOUR	L · W · H (MM)	ORDERCODE
STREX system   surface	White	275-146-18	9 0 0 1 4 2 9 2
STREX system   surface	Black	275-146-18	9 0 0 1 4 2 9 3

[258262WQ3] The technical data represent rated values for an ambient temperature of 25°C. The data values for the luminous flux are initially subject to a tolerance of +/- 10%, those for the electrical connected load are initially subject to a tolerance of +/- 10%, and those for the colour temperature are initially subject to a tolerance of +/- 150 K. No liability is assumed for typographical or printing errors. The general terms and conditions of Wever & Ducré apply.

# RAY on STREX 1.0

258262WQ3

## X-Connector

TYPE	COLOUR	L · W · H (MM)	ORDERCODE
STREX system   surface	Black	275-275-18	9 0 0 1 4 2 9 4
STREX system   surface	White	275-275-18	9 0 0 1 4 2 9 5

## In Line Driver 100W

TYPE	COLOUR	L · W · H (MM)	ORDERCODE
STREX system   suspended	White	439-26-44	9 0 0 1 4 3 6 0
STREX system   suspended	Black	439-26-44	9 0 0 1 4 3 6 1

## In Line Driver 150W

TYPE	COLOUR	L · W · H (MM)	ORDERCODE
STREX system   suspended	White	439-26-44	9 0 0 1 4 3 6 2
STREX system   suspended	Black	439-26-44	9 0 0 1 4 3 6 3

## Ceiling Driver 100W

TYPE	COLOUR	L · W · H (MM)	ORDERCODE
STREX system   suspended	White	439-26-44	9 0 0 1 4 3 6 8
STREX system   suspended	Black	439-26-44	9 0 0 1 4 3 6 9

## Ceiling Driver 150W

TYPE	COLOUR	L · W · H (MM)	ORDERCODE
STREX system   suspended	White	439-26-44	9 0 0 1 4 3 7 2
STREX system   suspended	Black	439-26-44	9 0 0 1 4 3 7 3

## DALI Selv Device

TYPE	L · W · H (MM)	ORDERCODE
STREX system	213-37-25	9 0 0 1 9 1 9 3



## Driver

TYPE	L · W · H (MM)	ORDERCODE
STREX system   100W	350-30-18	9 0 2 1 8 9 0 1
STREX system   150W	350-30-18	9 0 2 1 8 9 0 2
STREX system   250W	400-40-22	9 0 2 1 8 9 0 3

## SUSPENDED

### Track Profile 2m

TYPE	COLOUR	L · W · H (MM)	ORDERCODE
STREX system   suspended indirect light	Black	2000-26-29	9 0 0 1 4 0 B 5
STREX system   custom cut   suspended indirect light	Black	1000-1999-26-29	9 0 0 1 4 0 B 5 C C
STREX system   suspended indirect light	White	2000-26-29	9 0 0 1 4 0 W 5
STREX system   custom cut   suspended indirect light	White	1000-1999-26-29	9 0 0 1 4 0 W 5 C C

# RAY

## on STREX 1.0

258262WQ3

### Suspension Set

TYPE	COLOUR	L · W · H (MM)	ORDERCODE
STREX system   1.5m   suspended	Stainless Steel	80·23·1500	9 0 0 1 4 1 6 0
STREX system   3.0m   suspended	Stainless Steel	80·23·3000	9 0 0 1 4 1 6 1
STREX system   1.5m   suspended	Black	80·23·1500	9 0 0 1 4 2 7 4
STREX system   3.0m   suspended	Black	80·23·3000	9 0 0 1 4 2 7 5

### Track Profile 3m

TYPE	COLOUR	L · W · H (MM)	ORDERCODE
STREX system   suspended indirect light	Black	3000·26·29	9 0 0 1 4 1 B 5
STREX system   custom cut   suspended indirect light	Black	2001·2999·26·29	9 0 0 1 4 1 B 5 C C
STREX system   suspended indirect light	White	3000·26·29	9 0 0 1 4 1 W 5
STREX system   custom cut   suspended indirect light	White	2001·2999·26·29	9 0 0 1 4 1 W 5 C C

### COVER

#### Blank Cover 2m

TYPE	COLOUR	L · W · H (MM)	ORDERCODE
STREX system	Black	2000·18·3	9 1 1 0 0 2 B 0
STREX system	White	2000·18·3	9 1 1 0 0 2 W 0

### SURFACE

#### End Cap

TYPE	COLOUR	L · W · H (MM)	ORDERCODE
STREX system   surface/suspended	White	26·2.5·29	9 0 0 1 4 1 4 7
STREX system   surface/suspended	Black	26·2.5·29	9 0 0 1 4 1 4 8
STREX system   surface/suspended	Champagne	26·2.5·29	9 0 0 1 4 3 4 7
STREX system   surface/suspended	Bronze	26·2.5·29	9 0 0 1 4 3 4 8

#### Track Profile 1m

TYPE	COLOUR	L · W · H (MM)	ORDERCODE
STREX system   surface/suspended	White	1000·26·29	9 0 0 1 4 1 8 1
STREX system   custom cut   surface/suspended	White	200·999·26·29	9 0 0 1 4 1 8 1 C C
STREX system   surface/suspended	Black	1000·26·29	9 0 0 1 4 1 8 2
STREX system   custom cut   surface/suspended	Black	200·999·26·29	9 0 0 1 4 1 8 2 C C

# RAY

## on STREX 1.0

258262WQ3

### Track Profile 2m

TYPE	COLOUR	L · W · H (MM)	ORDERCODE
STREX system   surface/suspended	White	2000-26-29	9 0 0 1 4 1 8 3
STREX system   custom cut   surface/suspended	White	1001-1999-26-29	9 0 0 1 4 1 8 3 C C
STREX system   surface/suspended	Black	2000-26-29	9 0 0 1 4 1 8 4
STREX system   custom cut   surface/suspended	Black	1001-1999-26-29	9 0 0 1 4 1 8 4 C C
STREX system   surface/suspended	Champagne	2000-26-29	9 0 0 1 4 3 8 3
STREX system   custom cut   surface/suspended	Champagne	1001-1999-26-29	9 0 0 1 4 3 8 3 C C
STREX system   surface/suspended	Bronze	2000-26-29	9 0 0 1 4 3 8 4
STREX system   custom cut   surface/suspended	Bronze	1001-1999-26-29	9 0 0 1 4 3 8 4 C C

### Track Profile 3m

TYPE	COLOUR	L · W · H (MM)	ORDERCODE
STREX system   surface/suspended	White	3000-26-29	9 0 0 1 4 1 8 5
STREX system   custom cut   surface/suspended	White	2001-2999-26-29	9 0 0 1 4 1 8 5 C C
STREX system   surface/suspended	Black	3000-26-29	9 0 0 1 4 1 8 6
STREX system   custom cut   surface/suspended	Black	2001-2999-26-29	9 0 0 1 4 1 8 6 C C
STREX system   surface/suspended	Champagne	3000-26-29	9 0 0 1 4 3 8 5
STREX system   custom cut   surface/suspended	Champagne	2001-2999-26-29	9 0 0 1 4 3 8 5 C C
STREX system   surface/suspended	Bronze	3000-26-29	9 0 0 1 4 3 8 6
STREX system   custom cut   surface/suspended	Bronze	2001-2999-26-29	9 0 0 1 4 3 8 6 C C

### L-Connector non-electrical

TYPE	COLOUR	L · W · H (MM)	ORDERCODE
STREX system   surface	White	105-105-19	9 0 0 1 4 2 5 8
STREX system   surface	Black	105-105-19	9 0 0 1 4 2 5 9
STREX system   surface	Gold + Black	105-105-19	9 0 0 1 4 4 5 8
STREX system   surface	Bronze + Black	105-105-19	9 0 0 1 4 4 5 9