

PIRRO OPAL 2.0

151284K5

GENERAL

Ceiling , Surface
Black Matt + Gold
RAL 9005 ^a
IP20
Interior
Output: 280 lm
CIE flux code: 65 94 100 100 100

LED

3000 K
CRI ≥ 90
L80 / 60000h
3 SDCM

OPTICAL

Opal

ELECTRICAL

phase-cut dim
220 - 240 V
Total connected power 6.6 W
Class 1

PHYSICAL

Length 94 mm
Width 50 mm
Height 65 mm
0.3 kg

^a Color may deviate slightly due to production conditions.

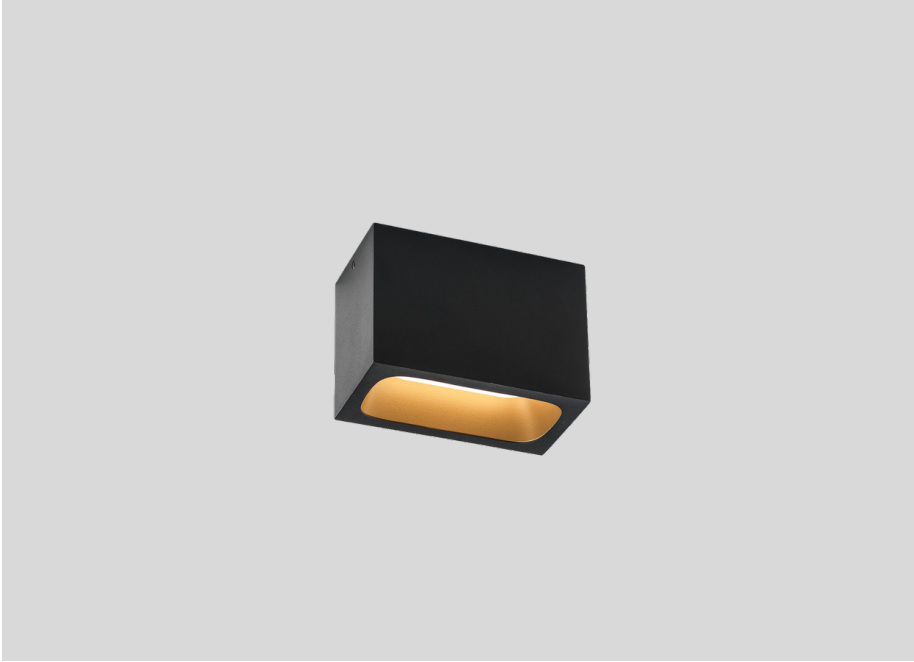
Project _____

Type _____

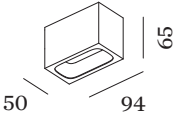
Notes _____

Quantity _____

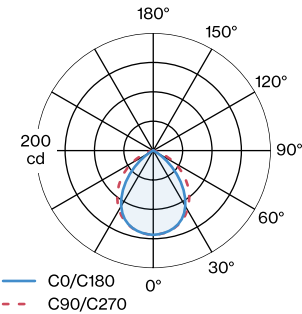
Date _____



Rectangular ceiling surface mounted downlight made from die-cast aluminium with opal PMMA cover; surface housing Black Matt powder coated; matt texture; with aesthetic frame in Gold wet painted; matt smooth; PCB 3-step binning; phase-cut dim; light colour 3000 K; binning initial MacAdam ≤ 3 SDCM; CRI ≥ 90 ; CRI (Colour Rendering Index) ≥ 90 ; degree of protection IP20; PC1; driver included; light source replaceable by an authorized professional; control gear replaceable by end-user;



LIGHT DISTRIBUTION



[151284K5] The technical data represent rated values for an ambient temperature of 25°C. The data values for the luminous flux are initially subject to a tolerance of +/- 10%, those for the electrical connected load are initially subject to a tolerance of +/- 10%, and those for the colour temperature are initially subject to a tolerance of +/- 150 K. No liability is assumed for typographical or printing errors. The general terms and conditions of Wever & Ducré BV apply.
© Wever & Ducré BV · Spinnerijstraat 99/21 · 8500 Kortrijk · Belgium · www.weverducre.com

PIRRO

OPAL 2.0

151284K5

MOUNTING

1.0 CEILING BASE

TYPE	COLOUR	L · W · H (MM)	ORDERCODE
PIRRO SYSTEM	White	754 · 51 · 12	9 0 0 5 2 0 7 2
PIRRO SYSTEM	Black	754 · 51 · 12	9 0 0 5 2 0 7 3
PIRRO SYSTEM	Gold	754 · 51 · 12	9 0 0 5 2 0 7 4

2.0 CEILING BASE

TYPE	COLOUR	L · W · H (MM)	ORDERCODE
PIRRO SYSTEM	White	1150 · 51 · 12	9 0 0 5 2 0 7 5
PIRRO SYSTEM	Black	1150 · 51 · 12	9 0 0 5 2 0 7 6
PIRRO SYSTEM	Gold	1150 · 51 · 12	9 0 0 5 2 0 7 7