



WEVER & DUCRÉ
LIGHTING

BOX 2.0 LED

186258L3 911251G1

Project

Type

Notes

Quantity

Date

GENERAL

Ceiling , Surface

Aluminium Brushed

Inset: Gold

IP20

Interior

Output: 1340 lm

CIE flux code: 96 99 100 100 100

LED

2700 K

CRI ≥ 90

3 SDCM

OPTICAL

Medium , Beam angle 21°

ELECTRICAL

phase-cut dim

220 - 240 V

Total connected power 16.0 W

Class 1

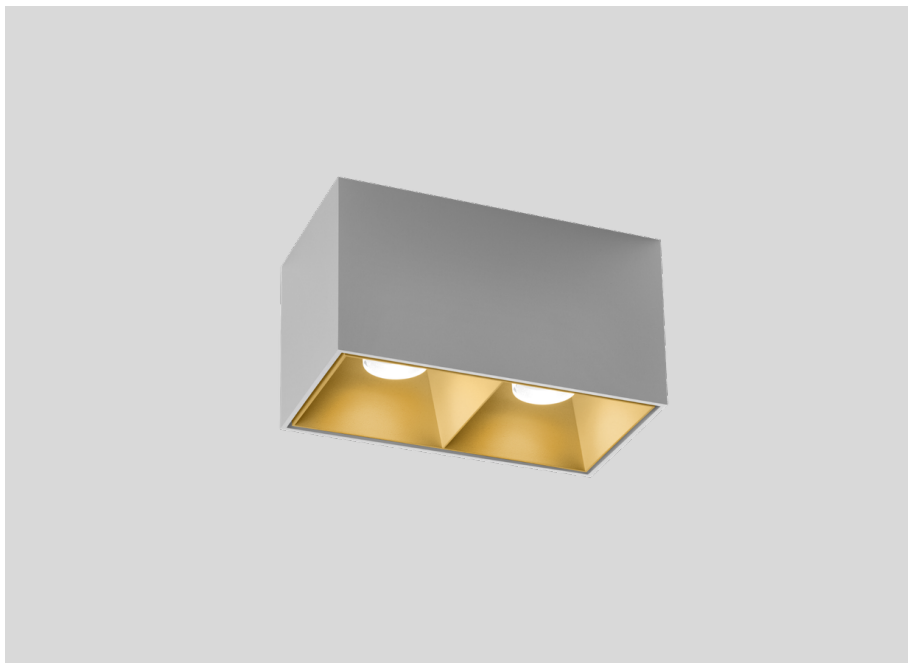
PHYSICAL

Length 188 mm

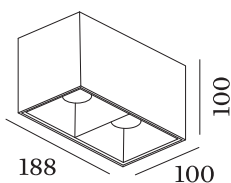
Width 100 mm

Height 100 mm

1.08 kg



Rectangular ceiling surface mounted downlight made from die-cast aluminium; surface Aluminium Brushed; with COB (Chip on Board) technology for maximum efficiency; phase-cut dim; light colour 2700 K; binning initial MacAdam ≤ 3 SDCM; CRI ≥ 90 ; 220 - 240 V; degree of protection IP20; PC1; UGR ≤ 13 ; VDU compatible workplace luminaire according to DIN EN 12464-1; luminance above 65° ≤ 3000 cd/m²; inclusive double inner reflector in Gold; light source replaceable by an authorized professional;





BOX
2.0 LED

186258L3 911251G1

COMPONENTS

Double Inner Reflector

TYPE	L · W · H (MM)	ORDERCODE
BOX 2.0 max. 10W	181-93-50	9 1 1 2 5 1 G 1