



WEVER & DUCRÉ  
LIGHTING

# PIRRO

## petit SURFACE 12.0

129954CH3

Project

Type

Notes

Quantity

Date

### GENERAL

Ceiling , Surface

Black Matt + Champagne

IP20

Interior

Output: 1920 lm

CIE flux code: 98 100 100 100 100

### LED

2700 K

CRI  $\geq 90$

L80 / 50000h

3 SDCM

### OPTICAL

Medium , Beam angle 28°

### ELECTRICAL

phase-cut dim

220 - 240 V

Total connected power 26.8 W

Class 1

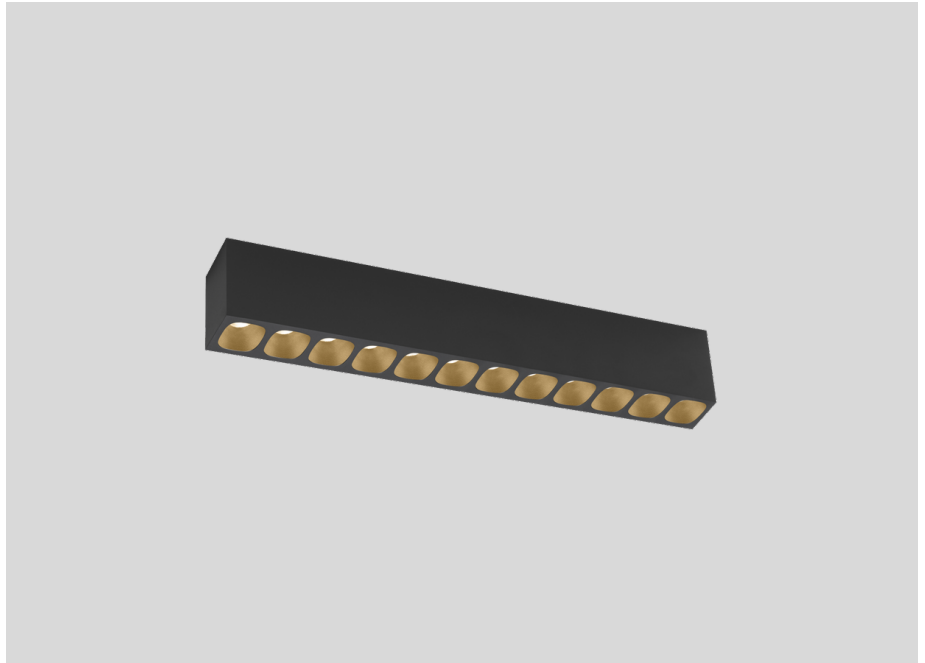
### PHYSICAL

Length 322 mm

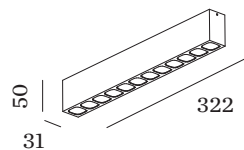
Width 31 mm

Height 50 mm

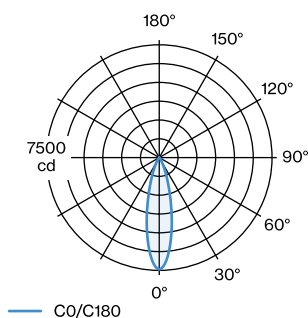
0.38 kg



Rectangular ceiling surface mounted downlight made from die-cast aluminium; surface Black Matt + Champagne; with COB (Chip on Board) technology for maximum efficiency; phase-cut dim; light colour 2700 K; binning initial MacAdam  $\leq 3$  SDCM; CRI  $\geq 90$ ; beam angle 28°; degree of protection IP20; PC1; UGR  $\leq 13$ ; driver included; light source replaceable by an authorized professional; control gear replaceable by end-user;



### LIGHT DISTRIBUTION





WEVER & DUCRÉ  
LIGHTING

# PIRRO

## petit SURFACE 12.0

129954CH3

### CONE DIAGRAM

medium 25°

h (m)	EO° (lx)	ø (m)
1	7440	0.45
2	1860	0.90
3	830	1.35
4	470	1.81
5	300	2.26