



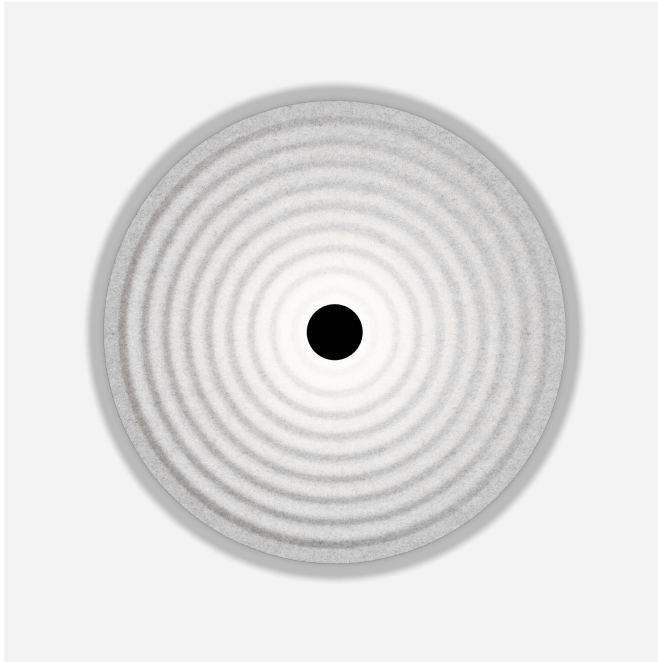
**PROJECT**

**TYPE**

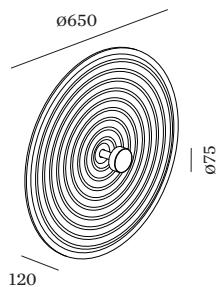
**NOTES**

**QUANTITY**

**DATE**



Wall surface luminaire integrated in an acoustic element made of high quality PET felt with sound absorbing properties; 100% recyclable; surface Felt Marble Grey; No matching RAL; PCB 3-step binning; phase-cut dim; light colour 2700 K;  $\leq 3$  SDCM (initial MacAdam); CRI  $\geq 90$ ; indirect light distribution; 220 - 240 V; degree of protection IP20; Class 1; driver included;



**LUMINAIRE**

Wall  
Surface  
Felt Marble Grey  
No matching RAL  
IP20  
Interior  
250 lm

**LED Module**

2700 K  
CRI  $\geq 90$   
L80 / 50000h  
 $\leq 3$  SDCM (initial MacAdam)  
520 lm  
87 lm/W<sup>a</sup>

**Optical**

Indirect  
CIE flux code: 16 41 69 50 100

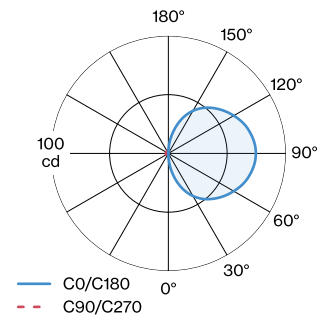
**Electrical**

phase-cut dim  
220 - 240 V  
system 8.3 W  
Class I

**Physical**

diameter 650 mm  
height 120 mm  
1.67 kg

**LIGHT DISTRIBUTION**



<sup>a</sup> Without electrical and optical losses



## Maintenance Factor

Operating Time [h]	10.000	20.000	30.000	40.000	50.000
LLMF	0.97	0.94	0.91	0.87	0.84
LSF	1	1	1	1	1

MF	$LMF \times RSMF \times LLMF \times LSF$	RSMF <sup>a</sup>	Room Surface Maintenance Factor
MF	Maintenance Factor	LLMF	Lamp Lumens Maintenance Factor
LMF <sup>a</sup>	Luminaire Maintenance Factor	LSF	Lamp Survival Factor

<sup>a</sup>According to "CIE 97, Maintenance of indoor electric lighting systems", 2005, ISBN 3-900-734-34-8. The values must be determined by the planner.