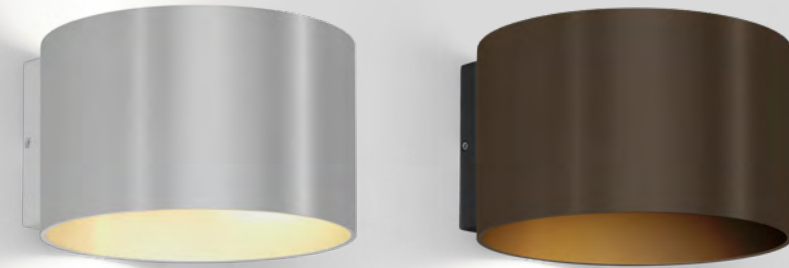




# RAY

WALL SURFACE



## 1.0 QT14

QT14 max. 75W | G9  
220-240VAC | 50-60Hz  
aluminium powder coated  
brushed wet painted

IP20 0.62kg

	CODE
	3221GOW0
	3221GOL0
	3221GOG0
	3221GOM0
	3221GOQ0
	3221GOP0
	3221GOB0

## OPTIONAL

flaps for adjustable beam angle

	CODE
	900401W0

QT14 3.1W | G9 | phase-cut dim

	CODE
3000K   280lm	9010G804

more lamps and specs on page 744



## 1.0 LED

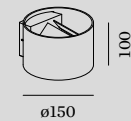
LED PCB 6W | phase-cut dim  
220-240VAC | 50-60Hz  
aluminium powder coated  
brushed wet painted

IP20 SDCM3 L70|50K 0.62kg

	CODE
	342168W_
	342168L_
	342168G_
	342168M_
	342168Q_
	342168P_
	342168B_

incl. adjustable flaps

LIGHT COLOUR	LUMEN CRI	CODE
2700K	350 >90	3
3000K	370 >90	5
1800-2850K	330 >90	9



## 2.0 LED

2x LED PCB 5W | phase-cut dim  
220-240VAC | 50-60Hz  
aluminium powder coated  
brushed wet painted

IP20 SDCM3 L70|50K 0.69kg

	CODE
	342148W_
	342148L_
	342148G_
	342148M_
	342148Q_
	342148P_
	342148B_

incl. adjustable flaps

LIGHT COLOUR	LUMEN CRI	CODE
2700K	2x440 >90	3
3000K	2x460 >90	5
1800-2850K	2x410 >90	9



161

257 | 289 | 303

331

609

643