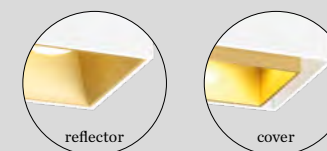
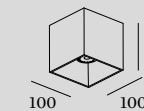
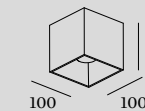
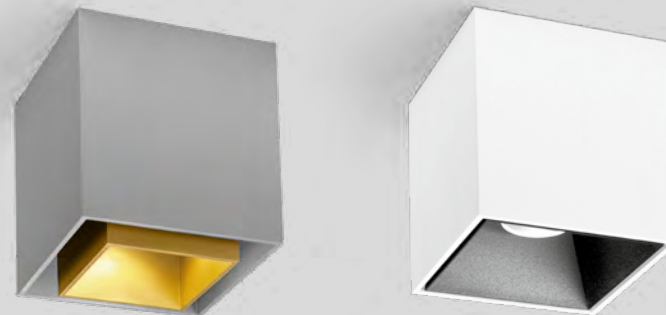




BOX

CEILING SURFACE



1.0 LED

LED COB 8W | dimmable
220-240VAC | 50-60Hz
aluminium powder coated
brushed lacquered

IP20 21° SDCM2 L70|50K 0.74kg

1.0 PAR16

PAR16 max. 12W | GU10
100-240VAC | 50-60Hz
aluminium powder coated
brushed lacquered

IP20 0.66kg

phase-cut dim

	CODE
	186158W_
	186158L_
	186158G_
	186158M_
	186158Q_
	186158P_
	186158B_

DALI dim

	CODE
	186159W_
	186159L_
	186159G_
	186159M_
	186159Q_
	186159P_
	186159B_

OPTIONAL

inner reflector max. 10W
wet painted polycarbonate

	CODE
	911211W1
	911211G1
	911211M1
	911211B1

inner cover max. 10W
aluminium powder coated brushed

	CODE
	911011W1
	911011G1
	911011M1
	911011B1

LIGHT COLOUR	LUMEN CRI	CODE
2700K	670 >90	3
3000K	700 >90	5
2000-3000K*	470 >90	9

*only for phase-cut dim

	CODE
	146120W0
	146120L0
	146120G0
	146120M0
	146120Q0
	146120P0
	146120B0

OPTIONAL

PAR16 6.5W | GU10 | phase-cut dim

	CODE
	2700K 460lm 901228W3
	2700K 437lm 901228B3
	3000K 500lm 901228W5
	3000K 457lm 901228B5

more lamps and specs on page 743